

DELIVERING AVIATION DATA TO THE POINT OF NEED



Make your flying easy

PLOG : QUICK START USER GUIDE

Contents

1. Introduction	2
2. Enter Flight Details.....	2
2.1. Required Information	2
2.2. Optional Details	2
3. Enter Departure & Destination	3
3.1. Departure	3
3.2. Destination	3
4. Personal Route Map.....	4
4.1. Panning and zooming	4
4.2. Choosing Layers	5
4.3. Viewing NOTAM details	6
4.4. Auto-fit route	6
5. Add Waypoints to Route.....	7
5.1. Add points using 'Click to Locate'	7
5.2. Add points via routing panel.....	8
6. Optional Wind and Speed Information.....	9
7. Print the PLOG	10
8. Print the Pack	10

1. Introduction

The *Personal Route Planner* option has been updated to include a **PLOG** function. The main stages to produce a briefing with PLOG are:-

- Enter Flight Details
- Enter Departure & Destination
- Create Route Plot
- Add waypoints to route
- Enter Wind and Airspeed
- Print the PLOG
- Print the Pack

2. Enter Flight Details

2.1. Required Information

Date of Flight: defaults to today

- Click on the icon.
- Select the date required.

Traffic: defaults to both IFR/VFR

- Click on for IFR only.
- Click on for VFR

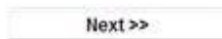
Maximum Planned Altitude:

- Enter height up to 61000 ft.

Route Corridor:

- Enter a width up to 999 nm.

Note: When the required items are completed the



button will appear in the bottom right of the screen.

2.2 Optional Details

Expected time of departure:

- Enter hours
- Enter minutes

Average fuel Burn:

- Enter up to 99999 litres/hr

Taxi Fuel:

- Enter up to 99 litres.

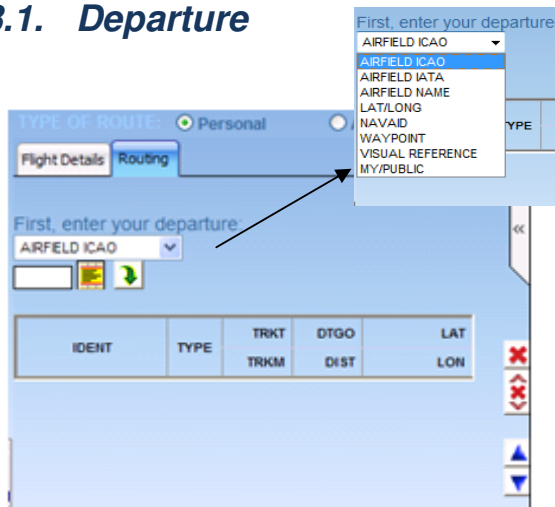
Total Fuel on-board:


- Enter up to 9999 litres.

- Select the button to move to the **'Routing'** tab.

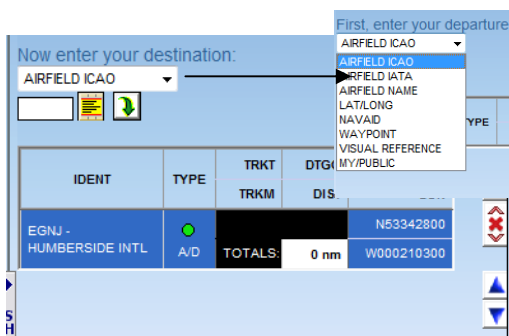
3. Enter Departure & Destination


3.1. Departure



- Select departure point format from the drop down list.
- Enter Departure in the selected format
- Select the  button

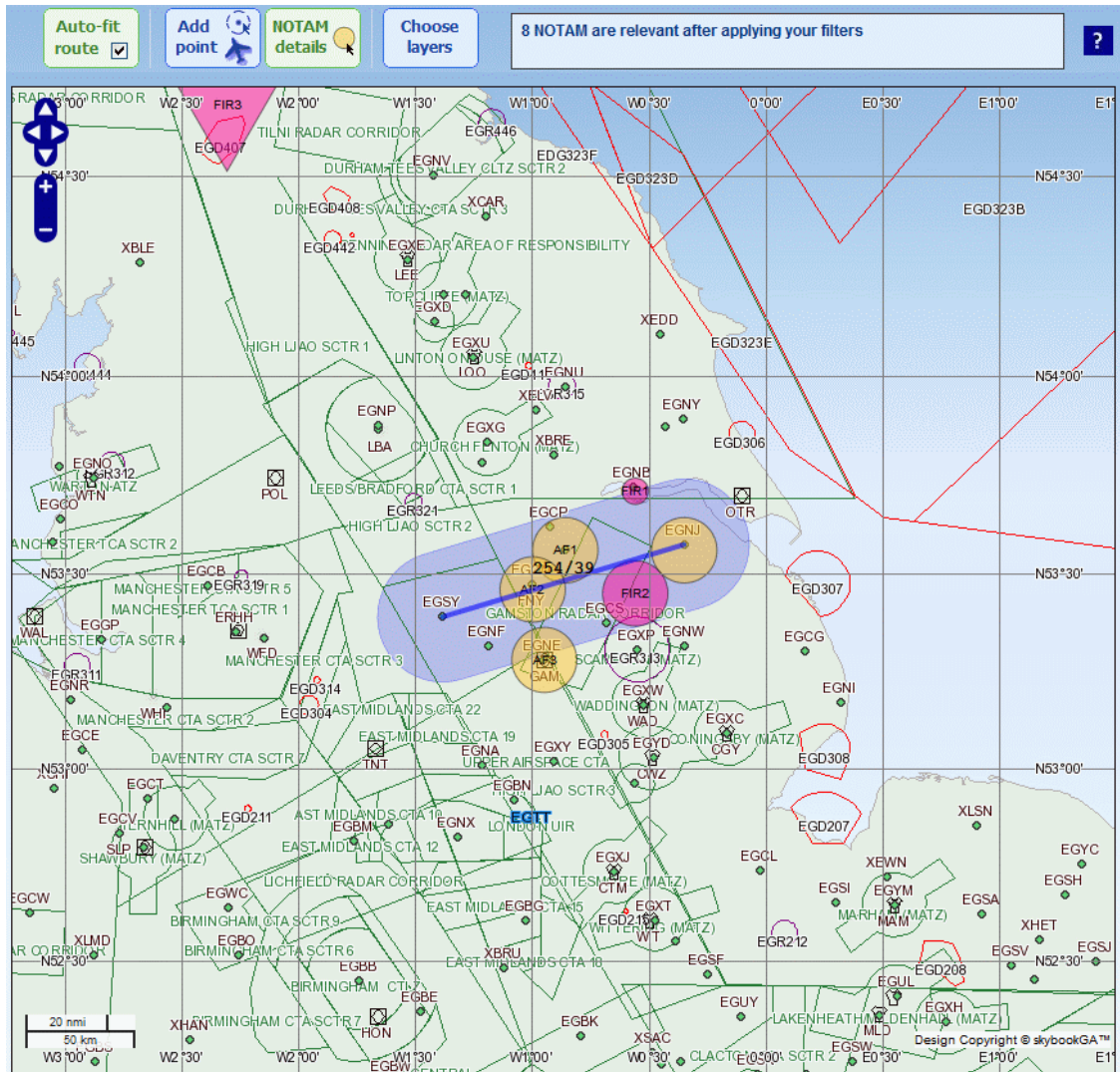
3.2 Destination



- Select destination point format from the drop down list.
- Enter Destination in the selected format
- Select the  button

4. Personal Route Map

In the right-hand pane, your personal route map is automatically drawn. Each data layer on the map is loaded independently, so you will see the layers loading incrementally until the full map is complete.



4.1. Panning and zooming

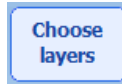


To pan around the map, you can drag the map with your mouse. Hold down the left mouse button and drag in the desired direction. You can also click the arrow icons at the top left of the map to pan the map by a small amount.

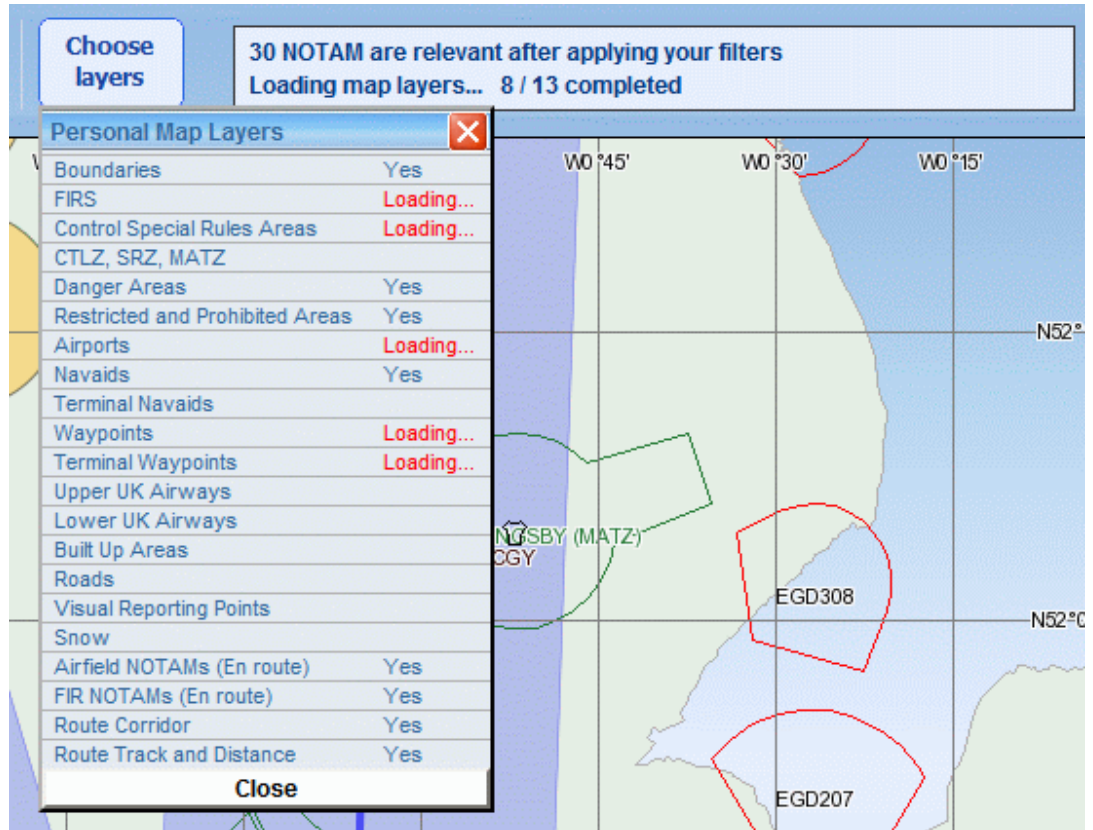
To zoom in, you can double-click on the map or click the plus icon at the top left. To zoom out, click the minus icon. For faster zooming in and out, you can use the mouse wheel.

4.2. Choosing layers

To choose the layers shown on your map, click or hover over the button:



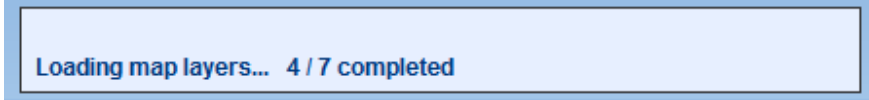
A drop-down will appear that shows the available map layers:



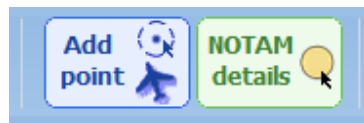
Turn a layer on or off by clicking on its name.

When a layer is turned on it will initially show as 'Loading...' until the layer data has been downloaded.

While layers are loading, there is a summary of the loading progress above the map. For example:



4.3. Viewing NOTAM details



Above the map there are two buttons that show the map mode.

Initially 'NOTAM details' mode is selected in green.

This mode allows you to click on any NOTAM applicable to your route and see the full NOTAM details.

Airfield NOTAM are represented by yellow circles and upturned triangles.

FIR NOTAM are represented by purple circles and upturned triangles.

EGXT [...] WITTERING

(AF3) U0231/11 - CACF/IV/B/AE/000/030/5237N00029W005
A/G FACILITY: VALID - 25-01-2011 11:09 - PERM

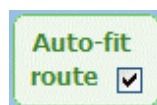
WITTERING FREQ CHANGED
APPROACH: UHF 234.075MHZ, VHF 125.525MHZ.
DIRECTOR: UHF 281.900MHZ, VHF 125.525MHZ.
FLIGHT PUBLICATIONS AMENDED IN DUE COURSE.

(AF3) U0374/11 - FAAH/IV/NBO/A/000/999/5237N00029W005
AERODROME: VALID - 28-03-2011 08:00 - 20-05-2011 16:00

AD HOURS MON-FRI 0800-1600. IF THERE ARE NO BOOKED DIVERSION COMMITMENTS OR PRACTICE DIVERSIONS ATC/OPS WILL CLOSE AT COMMANDERS DISCRETION. FOR PPR PLEASE LEAVE DETAILS AND CONTACT NUMBER ON ANSWERPHONE 01780-783838 EXTENSION 7050 WHICH WILL BE CHECKED ON THE NEXT WORKING DAY.

To close the NOTAM details, click the red close box or just click away from the NOTAM on the map.

4.4. Auto-fit route



By default, the route map will automatically zoom in or out to fit the route corridor whenever you add/delete or re-order a point on your route.

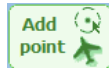
If you do not want to use the auto-fit feature, un-tick the checkbox.

5. Add Waypoints to Route

This can be done in two ways:-

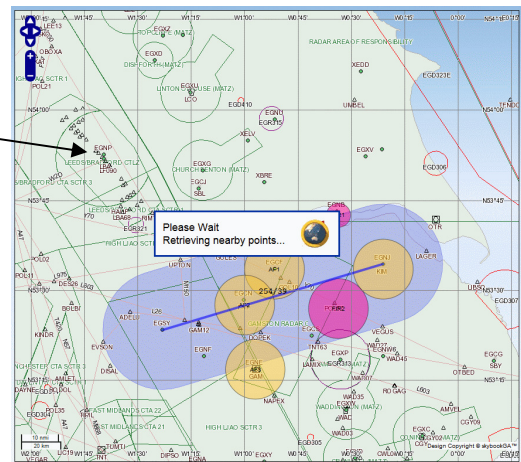
5.1. Add points using 'Click to Locate'

- Select the  button above the route map.




The button will turn green whilst this option is enabled.

- Click the left mouse button on the map at the appropriate point.
- Available points will include any airfields, nav aids, waypoints, visual reporting points in the immediate proximity as well as the latitude/longitude clicked.



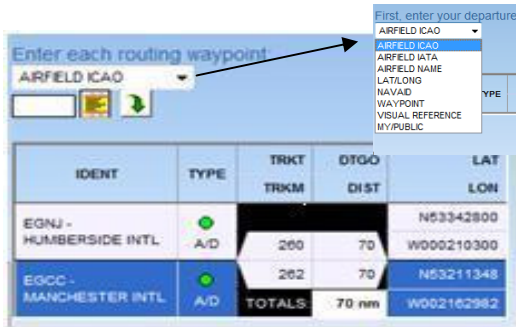
A window will open showing the latitude and longitude of the point selected. To include the point:-


Included points will be added to the routing list on the left.

- Select the  button.
- Repeat for all required points.

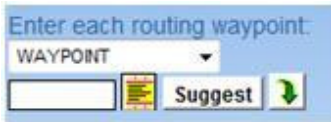
IDENT	TYPE	TRKT		DTGO		LAT	LONG
		TRKM	DIST	TRKM	DIST		
EGNJ - HUMBERSIDE	A/D	291	79			N53342800	W000210300
LBA UK	NDB	293	49			N53515397	W001391040
EGSY - SHEFFIELD C	A/D	184	30			N53232400	
TOTAL:		79NM					W001231201

5.2. Add points via routing panel



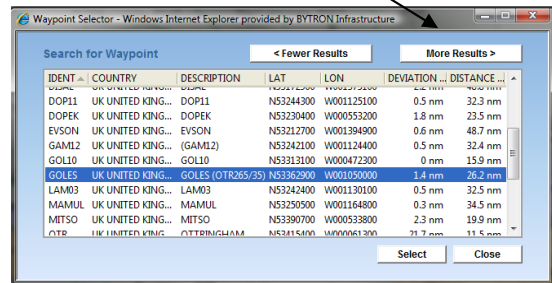
- Select waypoint format from the drop down list.
- Enter Waypoint in the selected format
- Select the  button

Note: when the format selected is related is 'NAVAID', 'WAYPOINT' or 'VISUAL REFERENCE' assistance is provided with a suggestion list. e.g.



- Select the **Suggest** button

- Highlight the required waypoint.
- Click the **Select** button to update the routing panel.



- Repeat for all required points.

6. Optional Wind and Speed Information

IDENT	TYPE	TRKT TRKM	DTGO DIST	LAT LON
EGNU - HAMBURGSIDE INTL	A/D	275	71	N53242800 W00212300
GOLES UK	WPT	277	28	N53382900 W001850000
N53280358 W001414141	GPS FIX	247	24	N53280358 W001414141
EGCC - MANCHESTER INTL	A/D	280	21	N53211348 W002182882
		TOTALS	71 nm	

Enter Wind and Speed Information (Optional)

➤ Select the **Enter Wind and Speed Information (Optional)** button.

IDENT	TYPE	TAS WIND	GS	TRKT TRKM	HQGR	DTGO DIST	FUELREQ REMAIN	EST ETA	LAT LON
EGNU - HAMBURGSIDE INTL	A/D	M	---	275	---	71	---	---	N53242800 W00212300
GOLES UK	WPT	* M	M	277	---	28	---	---	N53382900 W001850000
N53280358 W001414141	GPS FIX	* M	M	247	---	24	---	---	N53280358 W001414141
EGCC - MANCHESTER INTL	A/D	* M	M	280	---	21	---	---	N53211348 W002182882

The True Track (TRKT); Magnetic Track (TRKM); Distance To Go (DTGO) and the Flight Leg distances (DIST) fields are populated with data.

For the first leg:-

- Enter the estimated True Air Speed(TAS)
- Enter Wind Direction
- Enter Wind speed

These values are automatically copied into all subsequent flight legs. (These 'greyed out' data can be changed by typing in the required value.)
The remaining data items are calculated. Fuel calculations will only be shown if the optional flight details fields have been entered.

IDENT	TYPE	TAS WIND	GS	TRKT TRKM	HQGR	DTGO DIST	FUELREQ REMAIN	EST ETA	LAT LON
EGNU - HAMBURGSIDE INTL	A/D	70 kt	69	275	385	71	5.5	22m	N53242800 W00212300
GOLES UK	WPT	005 * M	10 M	277	28	28	985.5	14.522	N53382900 W001850000
N53280358 W001414141	GPS FIX	* M	M	247	24	24	988.5	15.122	N53280358 W001414141
EGCC - MANCHESTER INTL	A/D	* M	M	280	21	21	984.5	15.282	N53211348 W002182882
				TOTALS		71 nm	14.5 Litres	58m	

Note: It is possible to go back to add / change flight and route details at any time during the briefing process by selecting the appropriate panel.

